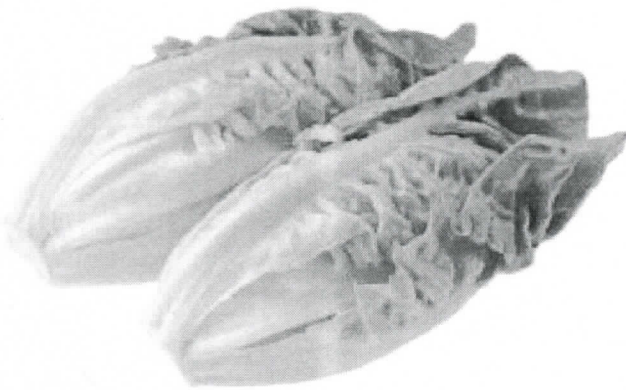




U.S.: CDC warns consumers not to eat Romaine lettuce after another E. coli outbreak

November 20 , 2018



The U.S. Centers for Disease Control (CDC) has warned consumers not to eat Romaine lettuce after an E. coli outbreak that has so far sickened 32 people across 11 states.

This is the second E. coli outbreak linked to Romaine lettuce so far in 2018, following an outbreak that sickened more than 190 people and killed five at the beginning of the year.

The CDC told consumers to throw away any romaine lettuce they may already have purchased.

In addition, restaurants should not serve it, stores should not sell it, and people should not buy it, no matter where or when the lettuce was grown, and no matter if it is chopped, whole head or part of a mix.

Of the ill people, 13 have been hospitalized. No deaths have yet been reported. Illnesses started on dates ranging from Oct. 8 – 31, with symptoms typically taking two to three weeks to appear.

Most illnesses have been registered in California (10) and Michigan (7). Cases have also been reported in Illinois, Massachusetts, Maryland, New Hampshire, New Jersey, New York, Ohio, Wisconsin.

The Food and Drug Administration (FDA) and states are working to trace back romaine lettuce that ill people ate in the current outbreak. No common grower, supplier, distributor, or brand of romaine lettuce has yet been identified.